

EK Series Professional Road Light One-piece heatsink, Open circuit protection

One-piece heatsink, Fast heat dissipation

Adopt ADC12 high thermal conductivity aluminum alloy material, beautiful appearance, speed up the heat dissipation of the lamp, and ensure the long service life of the lamp.

Using brand high-quality lamp beads, the luminous efficiency is as high as 130LM/W, ensuring high luminous efficiency, long life, safe and reliable.

Waterproof IP65

The structure of the built-in PC lens and the glass sealing silicone ring extends the life of the lens, strengthens the waterproof performance, and improves the maintenance factor.

The protection level reaches IP65, which is dustproof, waterproof, lightning-proof, rainstorm, and not affected by bad weather.

Security Protection

When the back cover is opened, the power will be cut off automatically to ensure the safety of maintenance personnel. It is convenient to connect and unplug cables, which is more convenient for later maintenance.

The tool-free opening and closing of the independent power supply compartment and terminal design greatly simplifies the installation and maintenance of the drive power supply. An additional 10KV lightning protection device is added to provide strong resistance to lightning and surges.

LED ROAD LIGHT – EK SERIES



High Efficacy
130LM/W



30° /60° /90° /120°
Type2 / Type3



Long Lifespan
50000H



High CRI
Ra70



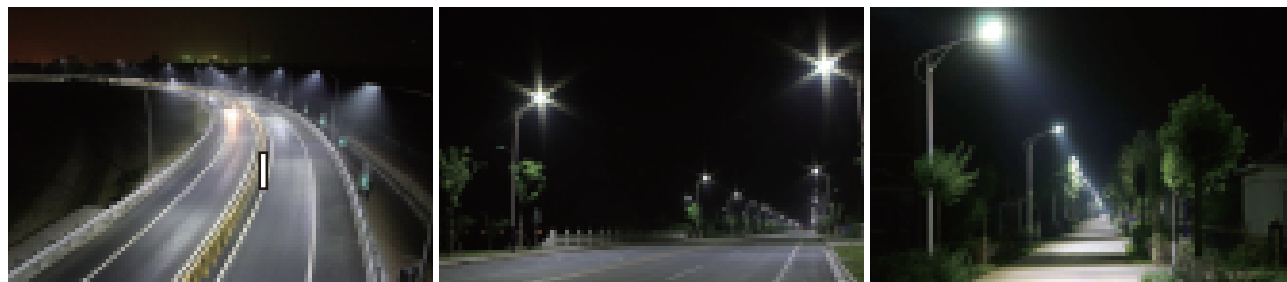
1-10V Dimming
Photocell / ZigBee / PLC



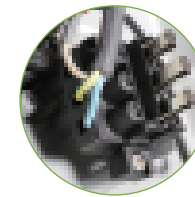
10KV Surge
Protection Device

Application

Applicable in outdoor lighting places such as rural driveways, campus roads, garden roads, sidewalks, etc.

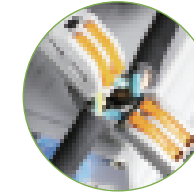


PRODUCT DETAILS



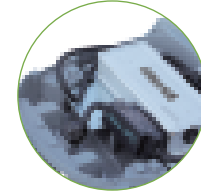
Safe power-off plug-in port

When the back cover is opened, the power will be cut off automatically to ensure the safety of maintenance personnel.



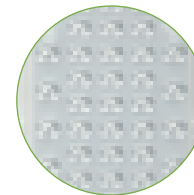
Simple wiring port

It is convenient to connect and unplug cables, which is more convenient for later maintenance.



Independent power box

The tool-free opening and closing of the independent power supply compartment and terminal design greatly simplifies the installation and maintenance of the drive power supply. An additional 10KV lightning protection device is added to provide strong resistance to lightning and surges.



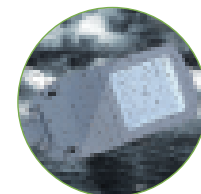
PC lens and glass

The structure of the built-in PC lens and the glass sealing silicone ring extends the life of the lens, strengthens the waterproof performance, and improves the maintenance factor.



Heat dissipation structure

Adopt ADC12 high thermal conductivity aluminum alloy material, beautiful appearance, speed up the heat dissipation of the lamp, and ensure the long service life of the lamp.



Waterproof IP65

The protection level reaches IP65, which is dustproof, waterproof, lightning-proof, rainstorm, and not affected by bad weather.

One-piece heatsink

The EK series heat sink adopts ADC12 integral molding, which not only has excellent heat dissipation, but also has a beautiful appearance.

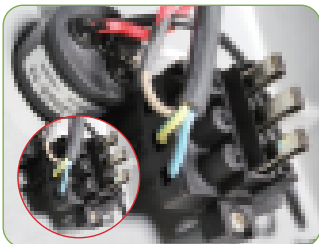
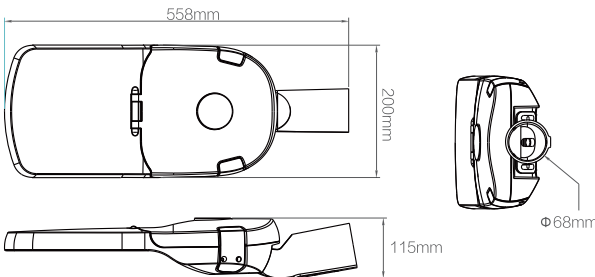
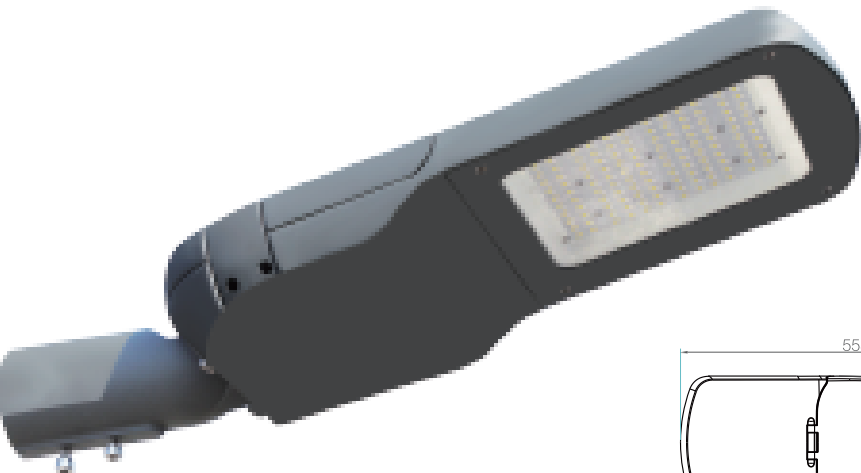
Modular lens

The EK series adopts modular lenses, which can be freely combined, with a wide range of light distributions, 30° /60° /90° /120° symmetrical light distribution, and Type2/Type3 asymmetrical light distribution.

Rotatable bracket

Rotating bracket can be installed vertically or horizontally without changing to a new bracket.

EK052-50W EK062-60W



Safe power-off plug-in port
When the back cover is opened, the power will be cut off automatically to ensure the safety of maintenance personnel.

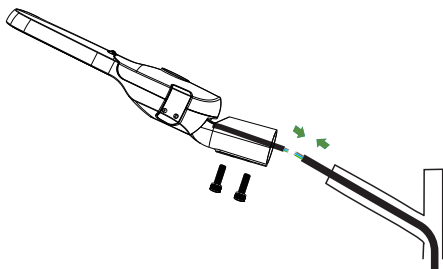


Simple wiring port
It is convenient to connect and unplug cables, which is more convenient for later maintenance.

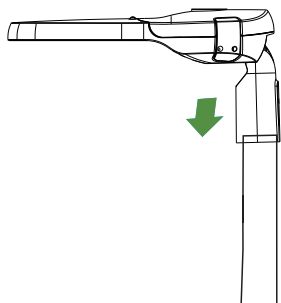


Tool-free buckle
Tool-free opening and closing button design, easy to operate. When the back cover is opened, the power will be cut off automatically, which is convenient for connecting and unplugging cables, which is more convenient for later maintenance.

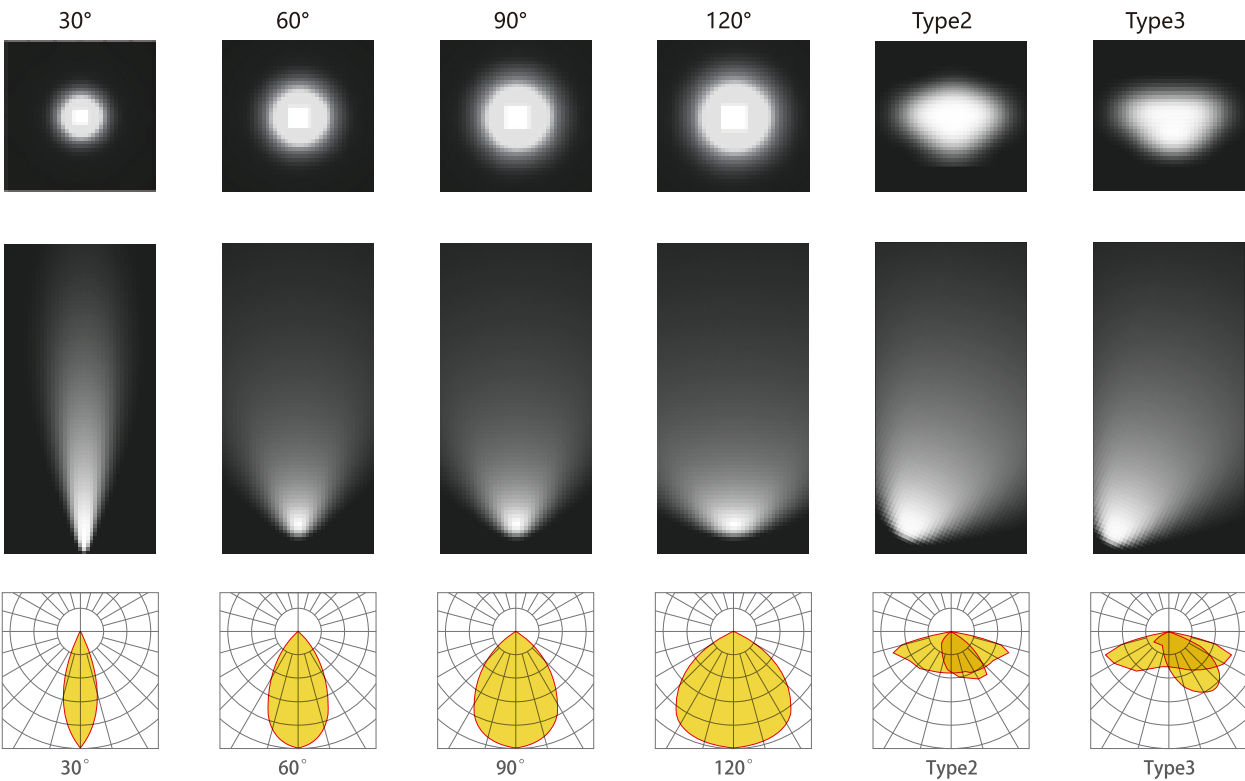
Standard Installation



Vertical Installation



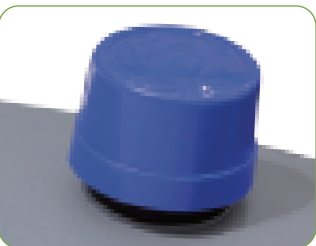
LIGHT DISTRIBUTION CURVE



PARAMETER

Model	EK052 / EK062
Input Voltage	100-277V AC 50/60Hz
Wattage	50W / 60W
Power Factor	≥0.9
Lumens	130lm/W
CCT	3000K / 4000K / 5000K / 6000K
Beam Angles	30° / 60° / 90° / 120° / Type2 / Type3
CRI	Ra≥70
Anti-Lightning	10KV

ACCESSORY

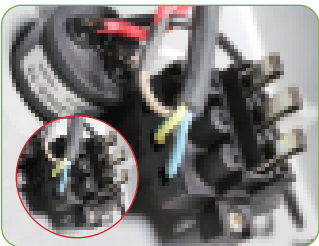
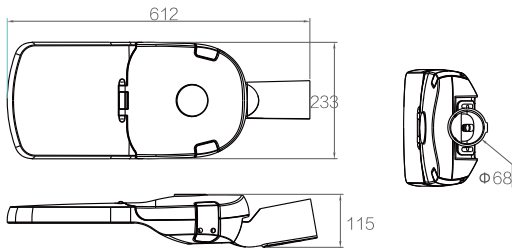
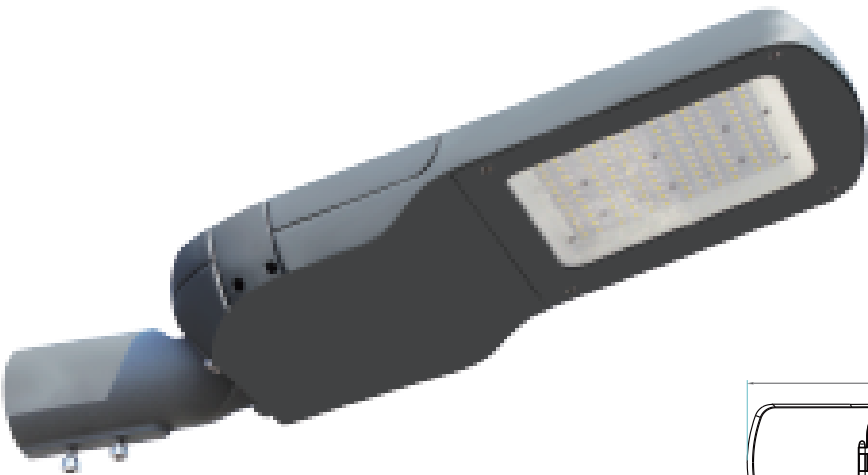


Photocell

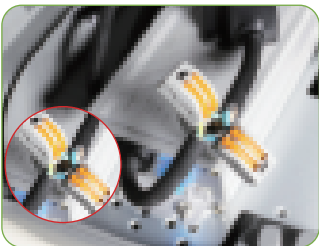


10KV Surge Protection Device

EK102-100W
EK122-120W



Safe power-off plug-in port
When the back cover is opened, the power will be cut off automatically to ensure the safety of maintenance personnel.

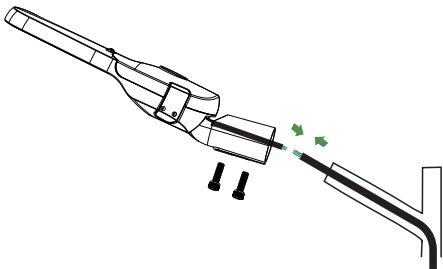


Simple wiring port
It is convenient to connect and unplug cables, which is more convenient for later maintenance.

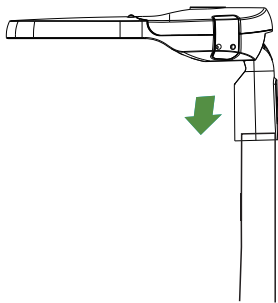


Tool-free buckle
Tool-free opening and closing button design, easy to operate. When the back cover is opened, the power will be cut off automatically, which is convenient for connecting and unplugging cables, which is more convenient for later maintenance.

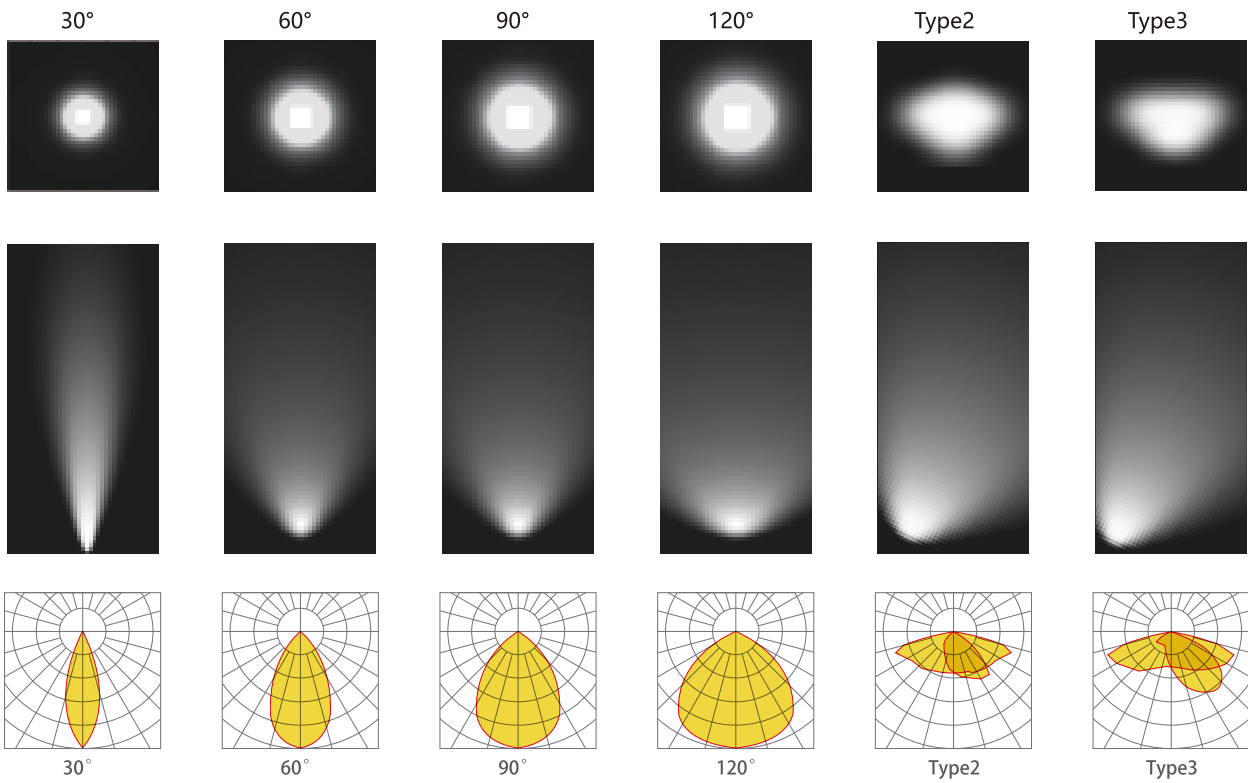
Standard Installation



Vertical Installation



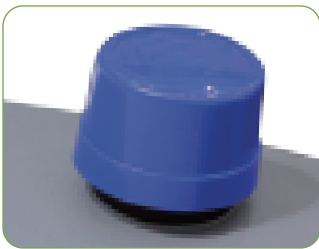
LIGHT DISTRIBUTION CURVE



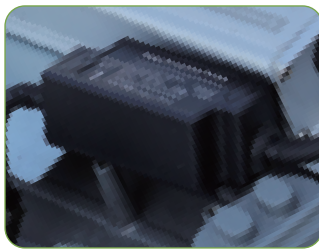
PARAMETER

Model	EK102 / EK122
Input Voltage	100-277V AC 50/60Hz
Wattage	100W / 120W
Power Factor	≥0.9
Lumens	130lm/W
CCT	3000K / 4000K / 5000K / 6000K
Beam Angles	30° / 60° / 90° / 120° / Type2 / Type3
CRI	Ra≥70
Anti-Lightning	10KV

ACCESSORY

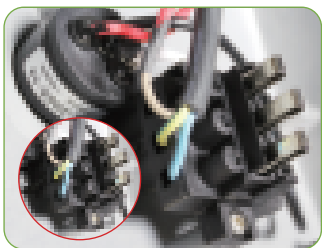
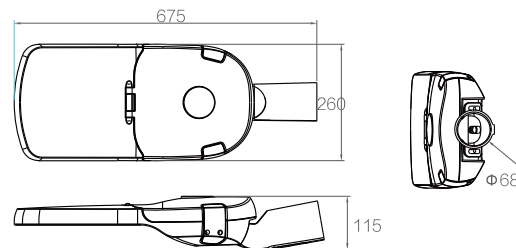
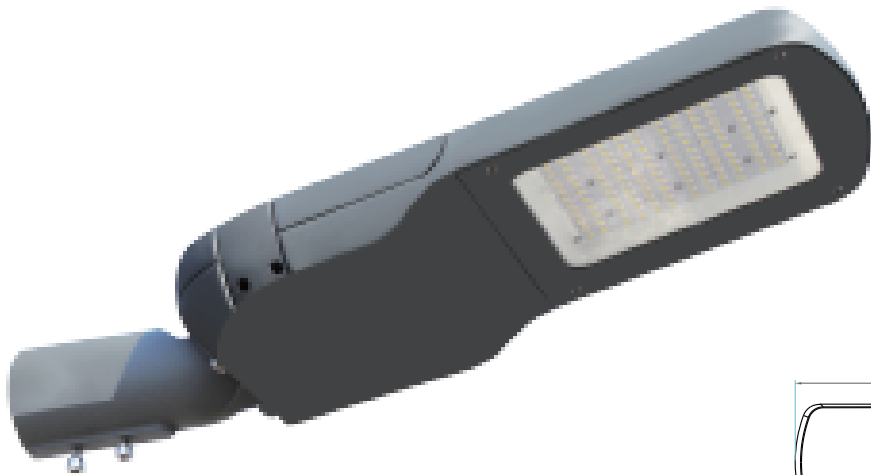
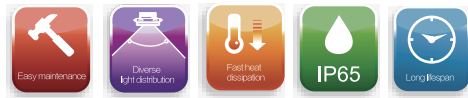


Photocell

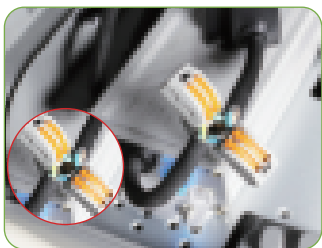


10KV Surge Protection Device

EK152-150W
EK182-180W



Safe power-off plug-in port
When the back cover is opened, the power will be cut off automatically to ensure the safety of maintenance personnel.

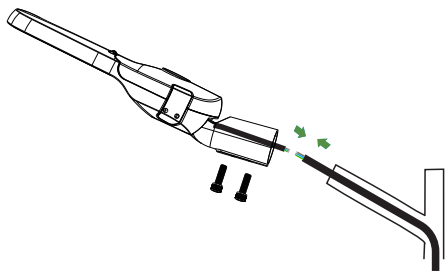


Simple wiring port
It is convenient to connect and unplug cables, which is more convenient for later maintenance.

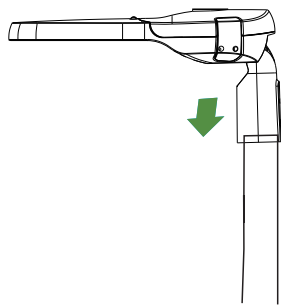


Tool-free buckle
Tool-free opening and closing button design, easy to operate. When the back cover is opened, the power will be cut off automatically, which is convenient for connecting and unplugging cables, which is more convenient for later maintenance.

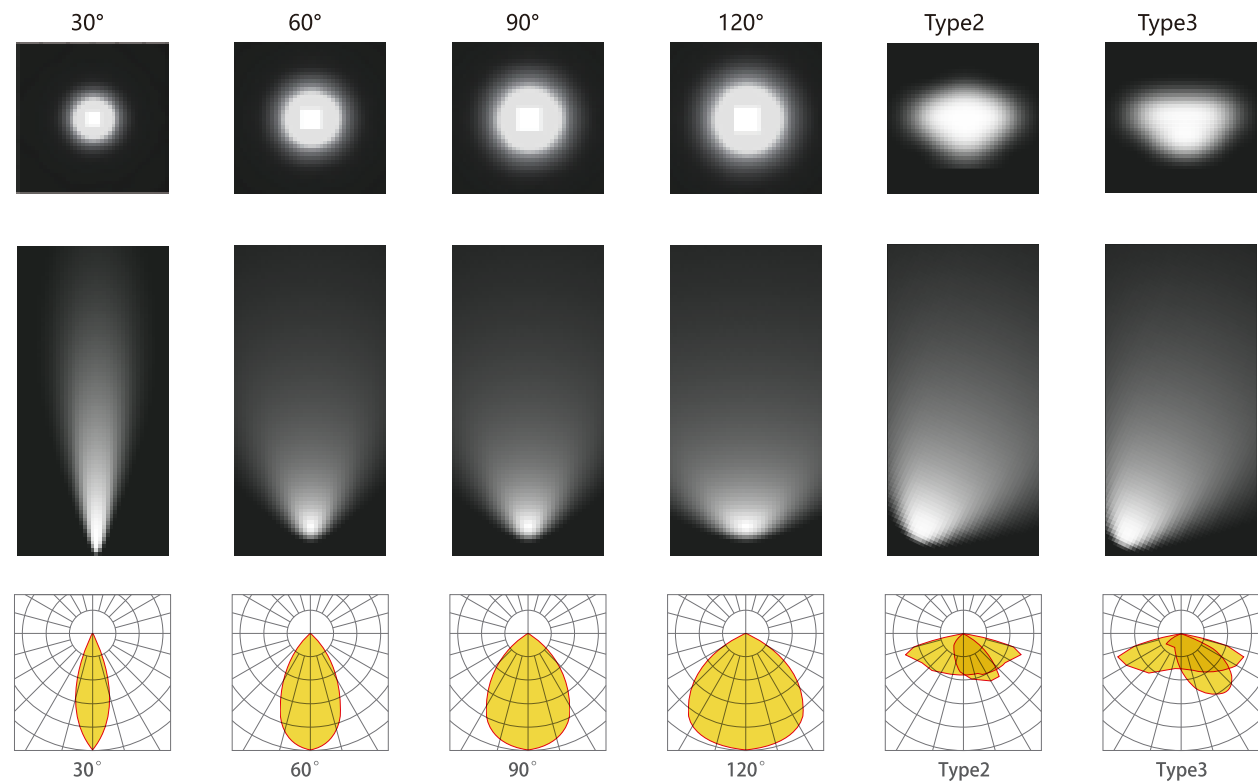
Standard Installation



Vertical Installation



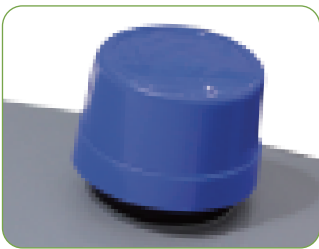
LIGHT DISTRIBUTION CURVE



PARAMETER

Model	EK152 / EK182
Input Voltage	100-277V AC 50/60Hz
Wattage	150W / 180W
Power Factor	≥0.9
Lumens	130lm/W
CCT	3000K / 4000K / 5000K / 6000K
Beam Angles	30° / 60° / 90° / 120° / Type2 / Type3
CRI	Ra≥70
Anti-Lightning	10KV

ACCESSORY

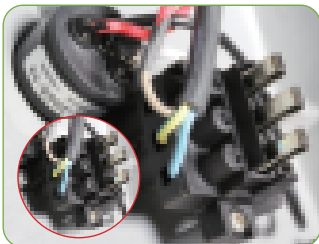
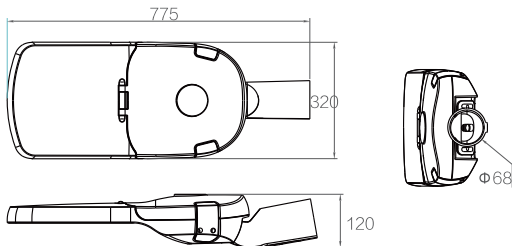
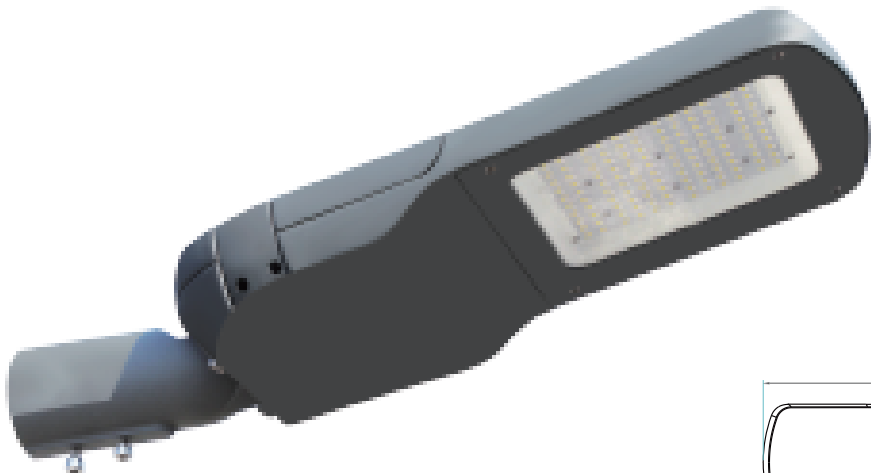


Photocell

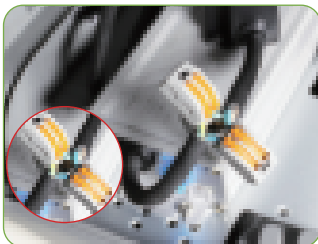


10KV Surge Protection Device

EK202-200W EK242-240W



Safe power-off plug-in port
When the back cover is opened, the power will be cut off automatically to ensure the safety of maintenance personnel.

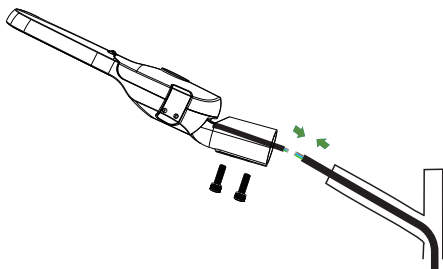


Simple wiring port
It is convenient to connect and unplug cables, which is more convenient for later maintenance.

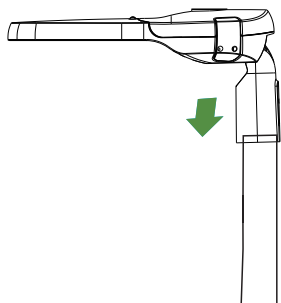


Tool-free buckle
Tool-free opening and closing button design, easy to operate. When the back cover is opened, the power will be cut off automatically, which is convenient for connecting and unplugging cables, which is more convenient for later maintenance.

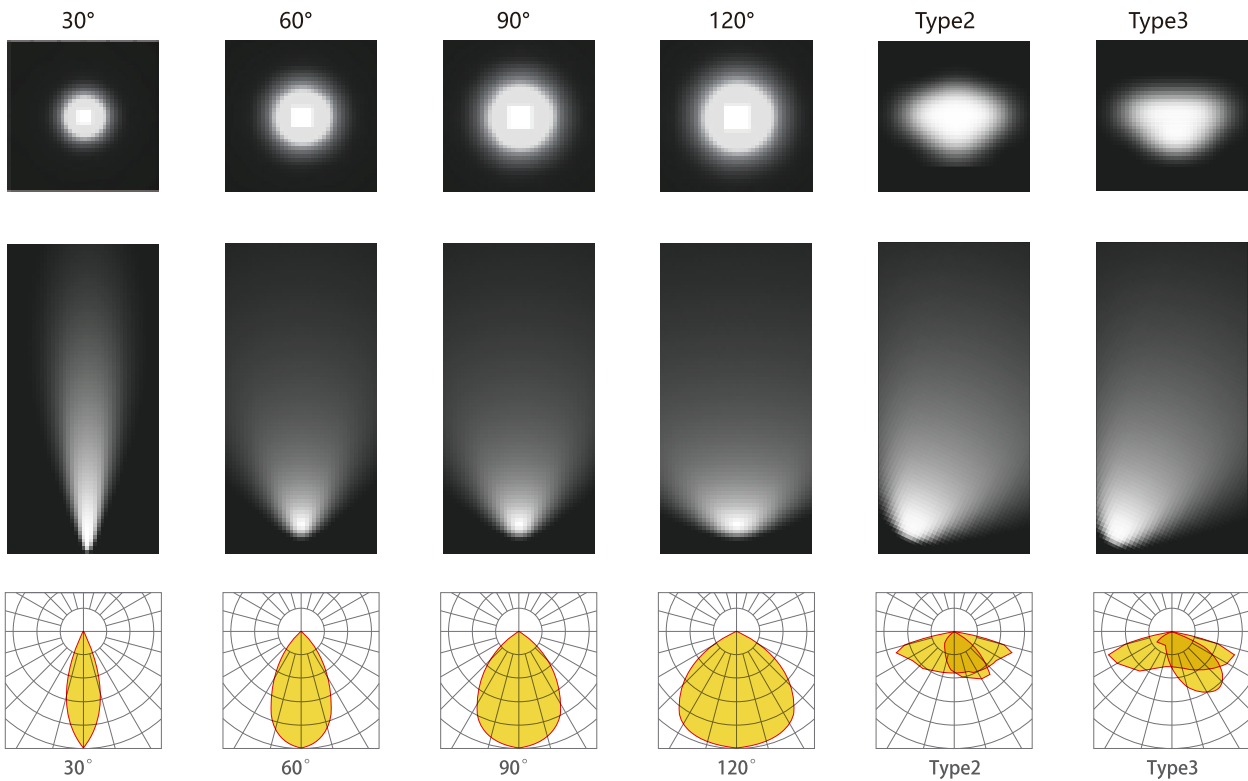
Standard Installation



Vertical Installation



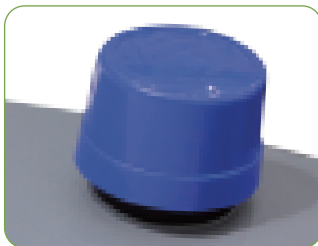
LIGHT DISTRIBUTION CURVE



PARAMETER

Model	EK202 / EK242
Input Voltage	100-277V AC 50/60Hz
Wattage	200W / 240W
Power Factor	≥0.9
Lumens	130lm/W
CCT	3000K / 4000K / 5000K / 6000K
Beam Angles	30° /60° /90° /120° /Type2 / Type3
CRI	Ra≥70
Anti-Lightning	10KV

ACCESSORY



Photocell



10KV Surge Protection Device